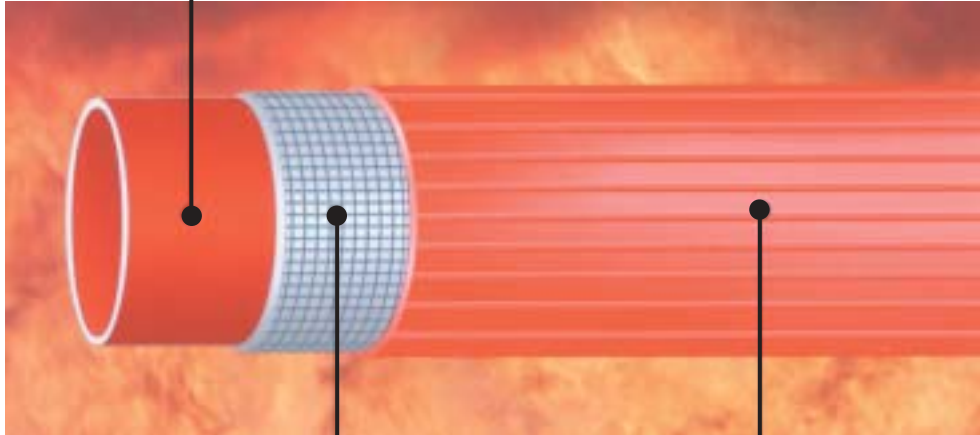


Gomtex® Fire Hose

FIRST LAYER:

Smooth low friction drop nitrile inner lining, which resists attacks from the most aggressive liquids.



SECOND LAYER:

Internal textile High Tenacity Polyester/Nylon reinforcement, with a weave designed to enhance strength and flexibility.

THIRD LAYER:

External nitrile rubber coat, which protects the textile and at the same time is used to tightly bond the inner layer and textile reinforcement. Ribbed to facilitate manipulation and improve abrasion.

GOMTEX®

INTERNAL DIAMETER	MILIMETRES	25	38	45	52	63.5	70	75	102	110	125	152
	INCHES	1"	1½"	1¾"	2"	2½"	2¾"	3"	4"	4⅓"	5"	6"
WEIGHT/METRE	GMS./METRE	225	325	375	425	545	610	700	1.080	1.190	1.300	1.780
	LBS./FOOT	0.150	0.215	0.250	0.285	0.365	0.410	0.470	0.725	0.790	0.870	1.190
THICKNESS	MILIMETRES	2.10	2.15	2.15	2.25	2.25	2.30	2.40	2.55	2.60	2.90	2.95
WORKING PRESSURE	BARS	30	20	20	20	20	20	15	15	15	10	10
	Psi	435	290	290	290	290	290	215	215	215	145	145
TESTS PRESSURE	BARS	45	25	25	25	25	25	20	20	20	15	15
	Psi	650	365	365	365	365	365	290	290	290	215	215
BURSTING PRESSURE	BARS	90	55	55	50	50	45	40	40	40	30	30
	Psi	1.300	800	800	725	725	650	580	580	580	435	435

Average results of the tested 96-98 hose batches

Specifications

GOMDUR

GOMDUR - 4K® fire hose is resistance to: abrasion, acids, chemicals, cold, cracking, delamination, heat, kinking, oils, ozone, weather, etc.

- Available in longer lengths.
- Temperature range: -30° C to +50° C.
- Maintenance free: needs no drying after use.
- Easy to coil, wet or dry.
- Repairs: ask for repair instructions and PM standard repair kit.
- Available with different international recognized approvals.
- Worldwide distribution. Ask for your local dealer/agent.
- HOW TO SPECIFY GOMDUR - 4K®: Four layer fire hose reinforced with Kevlar, following TWIN-LINE double independent extrusion through the weave process. Outer color: visible yellow.

GOMDUR - 4K®: Four layer fire hose reinforced with KEVLAR® following TWIN-LINE double independent extrusion process.

Only with exhaustive controls unique to PRODUCTOS MESA, allow us to guarantee that millions of KEVLAR® micro filaments are integrated in the fourth rubber layer. Due to the difficulty of working with new KEVLAR® materials, has obliged us to use a double independent extrusion.

TWIN-LINE double extrusion system guarantees a double safety level, being manufactured in two different extruders forming a four layer fire hose perfectly bonded, making impossible the delamination of third and fourth layer.

GOMDUR 4-K® is guaranteed by many years of expertise in rubber hose extrusion. Hose is guaranteed against defects in materials and workmanship only after all these tests are passed do.

GOMTEX

PERFORMANCE

More than 10 million metres have been supplied for fire fighting applications in every environment, from arid desert to arctic conditions.

GOMTEX® surpasses international Standards in abrasion, adhesion, chemical resistance, durability, flexibility, and is the result of the combination of technology, a quality proven R&D department and fire fighters comments over the years.

ALL the hoses are proof pressure tested ONE BY ONE, to guarantee their perfect life time.

GOMTEX® is guaranteed by many years of expertise in rubber hose extrusion. Hose is guaranteed against defects in materials and workmanship only after all these tests are passed do.

- GOMTEX® fire hose is resistant to: abrasion, acids, chemicals, cold, cracking, delamination, heat, kinking, oils, ozone, weather, etc.
- Standard color: RED. Other colors (blue, NATO green, grey, orange, yellow, etc.) available subject to minimum order quantity.
- Available in longer lengths.
- Temperature range: -30° C +50° C, even tougher conditions are achieved.
- Maintenance free: needs no drying after use.
- Easy to coil, wet or dry.
- Repairs: ask for repair instructions and PM standard repair kit.
- Available with different International recognized approvals.
- Worldwide distribution. Ask for your local dealer/agent.
- HOW TO SPECIFY GOMTEX®: High performance, cost-efficient extruded through the weave fire hose manufactured in a single extrusion.



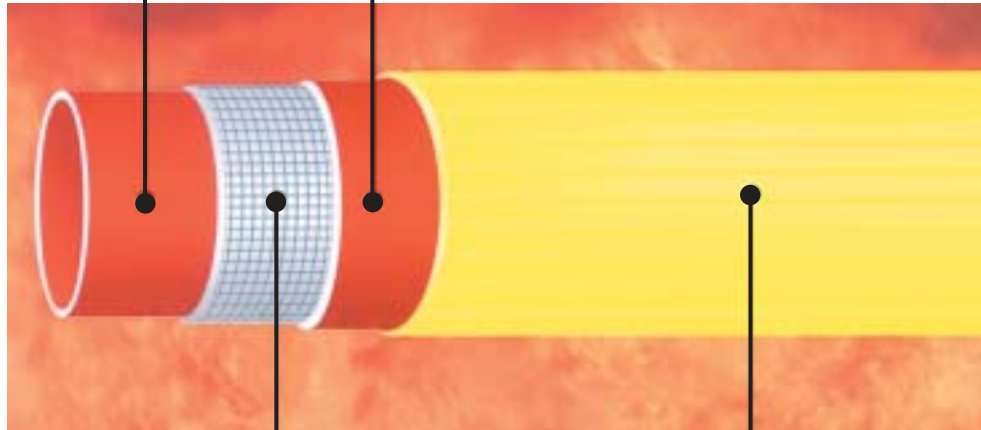
Gomdur® Fire Hose

FIRST LAYER:

Smooth low friction drop nitrile inner lining which resists attack from the most aggressive liquids.

THIRD LAYER:

Internal nitrile rubber coat, which protects the textile and at the same time is used to tightly bond the external layer.



SECOND LAYER:

Internal textile High Tenacity Polyester reinforcement, with a weave designed to enhance strength and flexibility.

FOURTH LAYER:

External protective coat of KEVLAR®/ HYPALON® rubber compound, which protects all the hose with its unique invisible fifth layer, from all external attack. PRODUCTOS MESA has a registered worldwide patent procedure for this.

COMDUR - 4K®

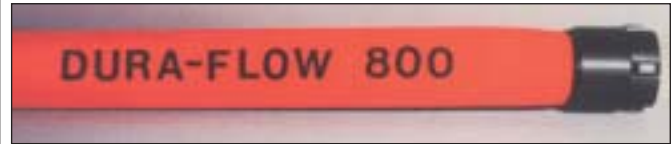
INTERNAL DIAMETER	MILIMETRES	25	38	45	52	63.5	70	75
	INCHES	1"	1½"	1¾"	2"	2½"	2¾"	3"
WEIGHT/METRE	GMS./METRE	225	355	420	440	590	680	725
	LBS./FOOT	0.150	0.240	0.280	0.295	0.395	0.455	0.485
THICKNESS	MILIMETRES	1.90	2.00	2.05	2.10	2.25	2.30	2.30
WORKING PRESSURE	BARS	30	20	20	20	20	20	15
	Psi	435	290	290	290	290	290	215
TESTS PRESSURE	BARS	50	35	30	30	30	30	25
	Psi	725	510	435	435	435	435	365
BURSTING PRESSURE	BARS	90	65	55	50	50	50	45
	Psi	1.300	940	800	725	725	725	650

North American Fire Hose Corporation

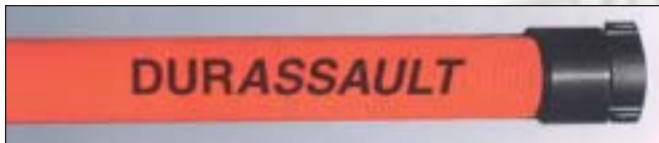
The hoses shown represent the complete line of North American Fire Hose municipal constructions. For your convenience we have identified each and indicated the page number where specifications can be found.



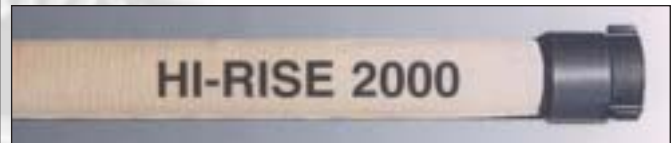
DURATTACK™ has a 100% synthetic, Cordura® Type 6-6 polyamide warp yarn outer jacket which is combined with a nitrile rubber through-the-weave inner hose. Page 70



DURA-FLOW 800™ is a 100% synthetic, double jacket construction utilizing Cordura® Type 6-6 polyamide warp and with a light weight extruded polyurethane liner. Page 72



DURASSAULT™ is a 100% synthetic, Cordura® Type 6-6 polyamide warp yarn outer jacket which is combined with a unique polyurethane through-the-weave inner hose. Page 70



HI-RISE 2000™ is a 100% synthetic, extremely light weight double jacket construction with a polyurethane extruded liner. For high-rise backpack applications. Page 72



POLY-TUF 800™ is a 100% polyester, double jacket construction with a high grade extruded [SBR] rubber liner. Totally immune to effects of mildew. Page 70



TRI-FLOW 600 LDH™ is a 100% synthetic, double jacket LDH attack grade construction utilizing Cordura® Type 6-6 polyamide warp yarn and with an extruded polyurethane liner. Page 74



POLY-FLOW 800™ is a 100% polyester, double jacket construction with a polyurethane extruded liner. Totally immune to effects of mildew. Page 70



HI-TECH 500™ and HI-TECH 600™ have a 100% synthetic reinforced construction totally encapsulated in a nitrile rubber compound using a through-the-weave extrusion process. Page 74



DURA-BUILT 800™ is a 100% synthetic, double jacket construction utilizing Cordura® Type 6-6 polyamide warp yarn and with a high grade extruded [SBR] rubber liner. Page 72



DURA-BUILT 800™ SPECIAL utilizes the same jacket construction as Dura-Built 800™ with a light gauge extruded [SBR] rubber liner. Page 72



HI-FLOW 400™ has a 100% synthetic reinforcement which is totally encapsulated in a nitrile rubber compound, utilizing a through-the-weave process. Page 74

North American Fire Hose Corporation

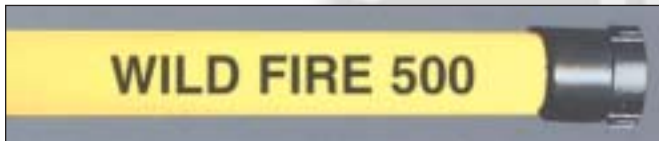
The hoses shown represent the complete line of North American Fire Hose municipal constructions. For your convenience we have identified each and indicated the page number where specifications can be found.



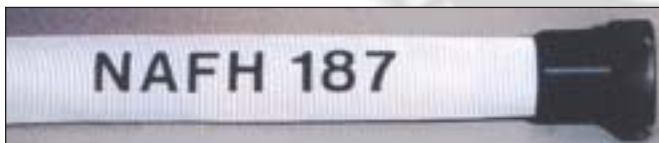
OUTBACK 600™ has a 100% synthetic polyester jacket with an extremely fine twill weave to improve abrasion resistance and resist snagging. Totally immune to mildew and incorporates an extruded polyurethane liner. Page 76



OUTBACK 600 HD™ utilizes the same jacket construction as OUTBACK 600™, while incorporating a light gauge rubber liner for improved puncture resistance where thorns or cactus are a concern. Page 76



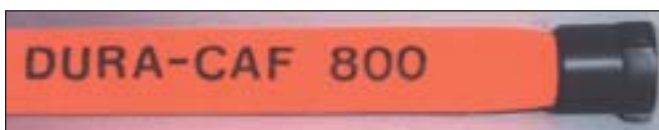
WILD FIRE 500™ has a synthetic jacket with a polyurethane extruded liner. Totally immune to mildew and designed for rigorous fighting wild-land and forestry fires. The special tight weave creates a very durable jacket. Page 76



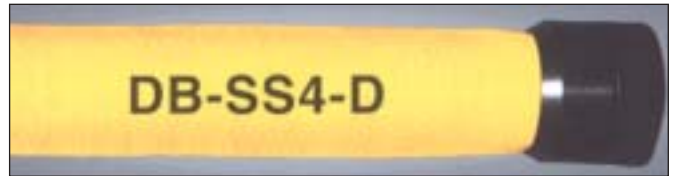
NAFH-187™ has a 100% synthetic jacket with a single ply polyurethane extruded liner. Totally immune to mildew. Comparable to USFS 5100-187 specification. Page 76



NAFH-186™ has a cotton polyester jacket with a high-grade extruded [SBR] rubber liner. The jacket has been treated against the effects of mildew in accordance with USFS requirements for 5100-186. This type of Forestry (Wildland fire protection) fire hose is desirable when hose melting and burning is a major concern. Page 76



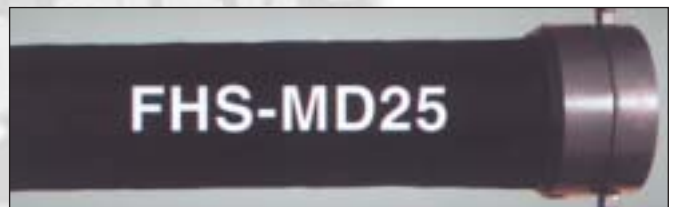
DURA-CAF 800™, a 100% synthetic compact double jacket construction utilizing Cordura® Type 6-6 polyamide warp yarn and with an extruded polyurethane liner. For compressed Air Foam systems. Page 76



DB-SS4-D™ 100% synthetic, double jacket construction with extruded (SBR) rubber liner. Outside jacket impregnated with Ultra-Shield™ high-tech polymer to add abrasion & moisture resistance. Page 78



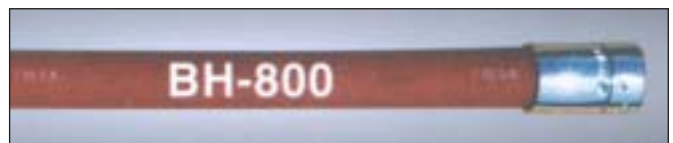
FHS-HD FIRE ENGINE HARD SUCTION HOSE is a heavy duty wire reinforced construction with an ozone resistant cover. Page 78



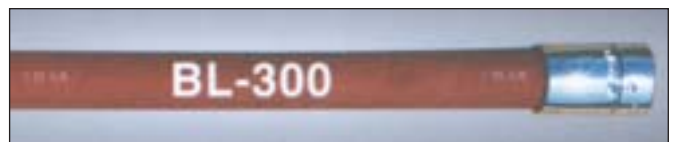
FHS-MD FIRE ENGINE HARD SUCTION HOSE is medium duty wire reinforced with an ozone resistant cover. Page 78



FHS-CHD FIRE ENGINE CORRUGATED HARD SUCTION HOSE is flexible wire reinforced with an ozone resistant cover. Page 78

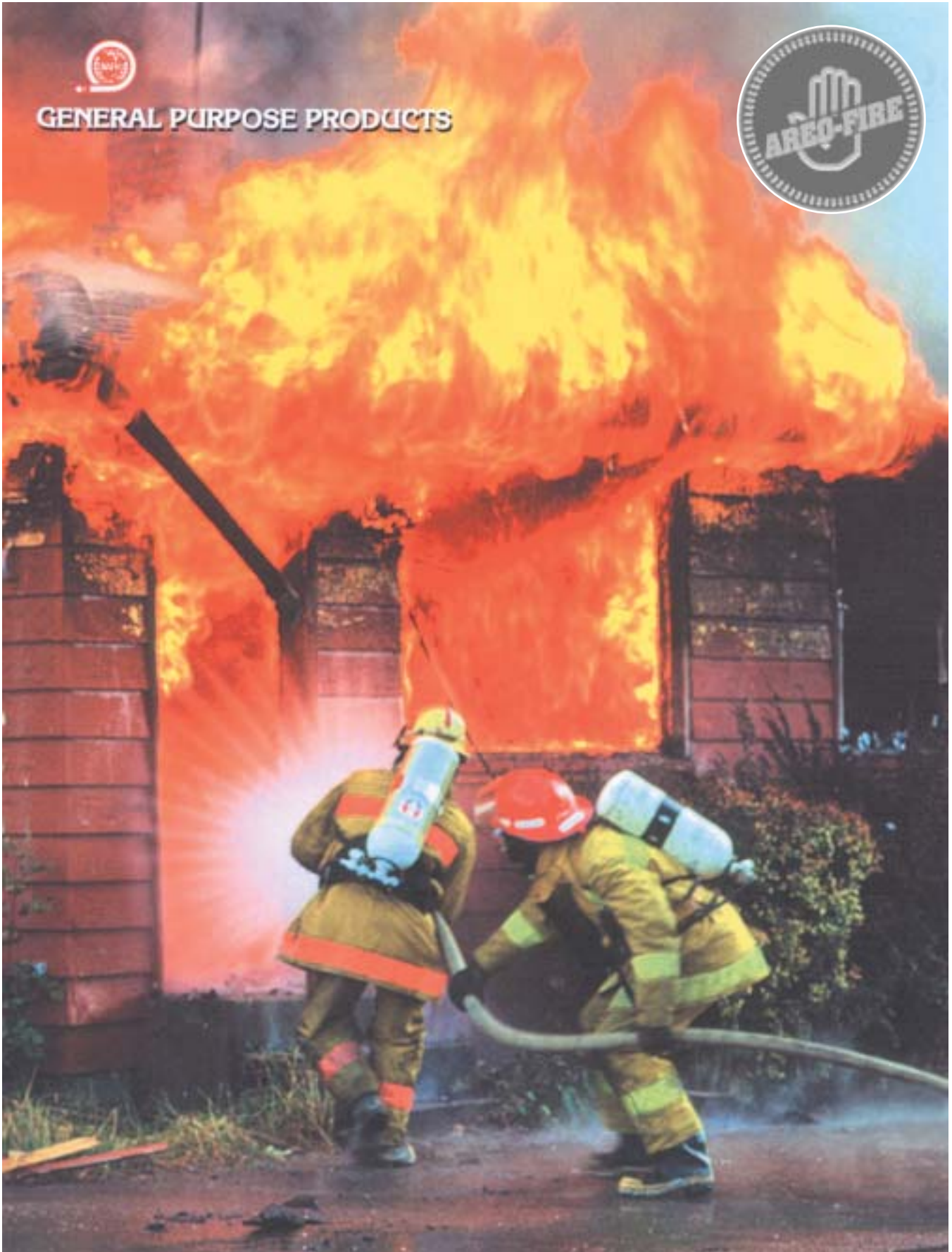


BH-800 BOOSTER HOSE is a braided construction with an ozone resistant cover available in lengths up to 200 Ft. Page 79



BL-300 BOOSTER HOSE is a braided construction with an ozone resistant cover available in lengths up to 200 Ft. Page 79

General Purpose Products



North American Fire Hose Corporation



DURATTACK 1000™

DURATTACK 1000™ is a 100% synthetic Cordura® Type 6-6 polyamide warp yarn outer jacket, which is combined with a nitrile rubber through-the-weave inner hose. The outside jacket is thoroughly impregnated with our Ultra-Shield™ high-tech polymer that is abrasion and moisture resistant. Available in 50 ft. lengths.

HOSE SIZE	SPECIFICATION NUMBER	ACCEPTANCE TEST PSI	SERVICE TEST PSI	BOWL SIZE	WEIGHT PER 50' UNCPLD.
1-3/4"	DT-1000-SYN	1000 PSI	500 PSI	2-1/8"	18 lbs.
2-1/2"	DT-1000-SYN	1000 PSI	500 PSI	3"	23 lbs.

DURASSAULT 800™

DURASSAULT 800™ is a 100% synthetic Cordura® Type 6-6 polyamide warp yarn outer jacket, which is combined with a polyurethane through-the-weave inner hose. The outside jacket is thoroughly impregnated with our Ultra-Shield™ high-tech polymer that is abrasion and moisture resistant. Available in 50 ft. lengths.

HOSE SIZE	SPECIFICATION NUMBER	ACCEPTANCE TEST PSI	SERVICE TEST PSI	BOWL SIZE	WEIGHT PER 50' UNCPLD.
1-3/4"	DA-800-SYN	800 PSI	400 PSI	2-1/8"	17 lbs.
2-1/2"	DA-800-SYN	800 PSI	400 PSI	3"	28 lbs.

POLY-TUFF 800™

POLY-TUFF 800™ is a 100% polyester, double jacket construction with a high grade, single-ply, extruded synthetic rubber liner. Available in 50 ft. or 100 ft. lengths, in plain white or with our Ultra-Shield™ impregnation.① Available with Factory Mutual and/or Underwriter's Label.

HOSE SIZE	SPECIFICATION NUMBER	ACCEPTANCE TEST PSI	SERVICE TEST PSI	BOWL SIZE	WEIGHT PER 50' UNCPLD.
1"	PT-800-AP	800 PSI	400 PSI	1-7/16"	13 lbs.
1-1/2"	PT-800-AP①	800 PSI	400 PSI	1-15/16"	18 lbs.
1-3/4"	PT-800-AP	800 PSI	400 PSI	2-1/8"	20 lbs.
2"	PT-800-AP	800 PSI	400 PSI	2-1/2"	24 lbs.
2-1/2"	PT-800-AP①	800 PSI	400 PSI	3"	34 lbs.
3"	PT-800-AP	800 PSI	400 PSI	3-17/32"	42 lbs.

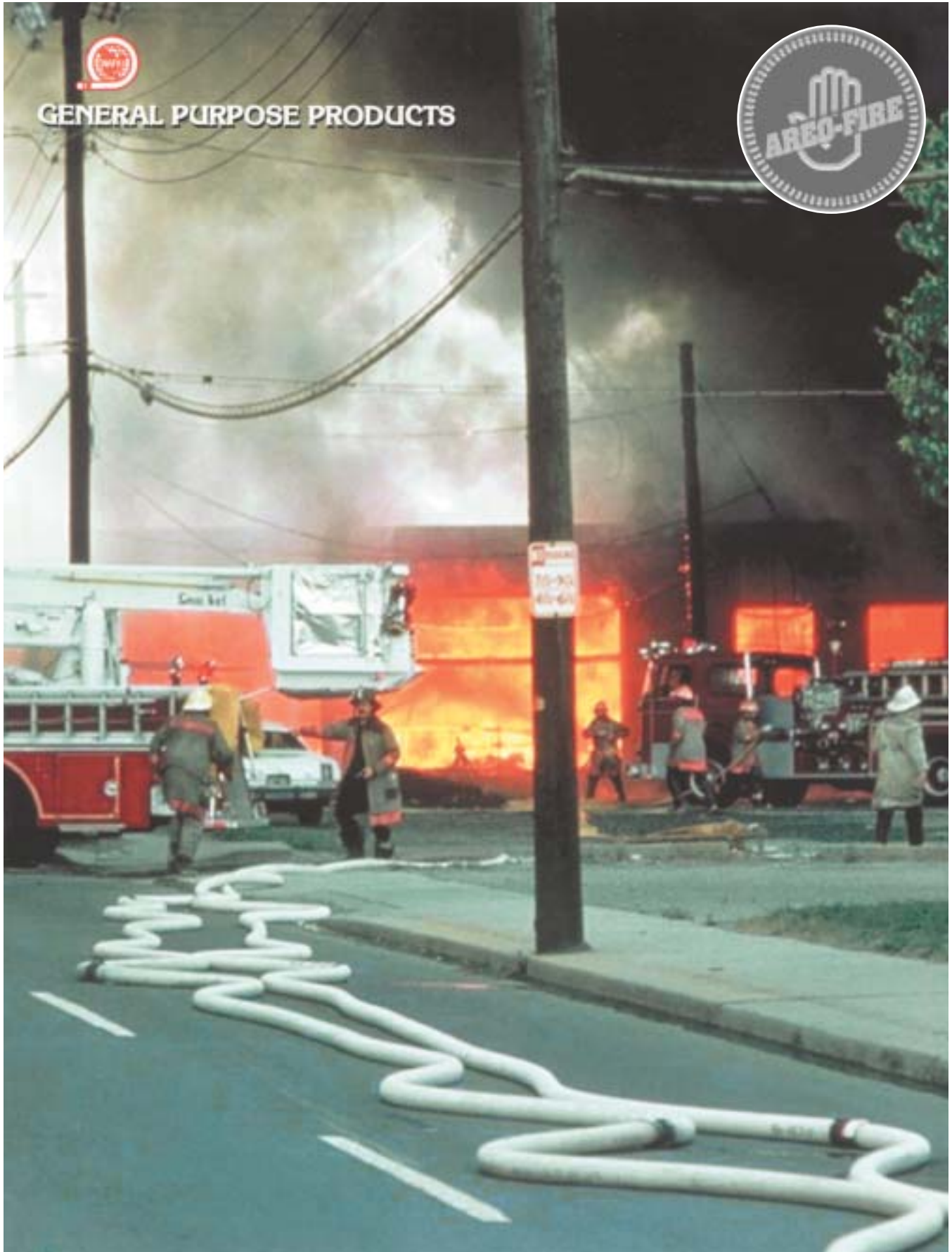
POLY-FLOW 800™

POLY-FLOW 800™ is a 100% polyester, double jacket construction with a single-ply polyurethane extruded liner. Available in 50 ft. or 100 ft. lengths, in plain or with our Ultra-Shield™ impregnation.② Available with Factory Mutual Label.

HOSE SIZE	SPECIFICATION NUMBER	ACCEPTANCE TEST PSI	SERVICE TEST PSI	BOWL SIZE	WEIGHT PER 50' UNCPLD.
1"	PF-800-AP	800 PSI	400 PSI	1-7/16"	10 lbs.
1-1/2"	PF-800-AP②	800 PSI	400 PSI	1-15/16"	13 lbs.
1-3/4"	PF-800-AP	800 PSI	400 PSI	2-1/8"	15 lbs.
2-1/2"	PF-800-AP	800 PSI	400 PSI	3"	22 lbs.
3"	PF-800-AP	800 PSI	400 PSI	3-17/32"	27 lbs.



General Purpose Products



North American Fire Hose Corporation



DURA-BUILT 800™

DURA-BUILT 800™ is a 100% synthetic [Cordura® Grade 6-6 polyamide warp] double jacket construction with a high grade, single-ply extruded synthetic rubber liner. The outside jacket is thoroughly impregnated with our Ultra-Shield™ high-tech polymer that is abrasion and moisture resistant. Available in 50 ft. or 100 ft. lengths.

HOSE SIZE	SPECIFICATION NUMBER	ACCEPTANCE TEST PSI	SERVICE TEST PSI	BOWL SIZE	WEIGHT PER 50' UNCPLD.
1-1/2"	DB-800-SYN	800 PSI	400 PSI	2-15/16"	17 lbs.
1-3/4"	DB-800-SYN	800 PSI	400 PSI	2-1/8"	19 lbs.
2"	DB-800-SYN	800 PSI	400 PSI	2-1/2"	24 lbs.
2-1/2"	DB-800-SYN	800 PSI	400 PSI	3"	32 lbs.
3"	DB-800-SYN	800 PSI	400 PSI	3-17/32"	40 lbs.

DURA-BUILT 800™ SPECIAL

DURA-BUILT 800™ SPECIAL utilizes the same jacket constructions as DURA-BUILT 800, and incorporates light gauge rubber liners for reduced weight and ease of handling. Available in 50 ft. or 100 ft. lengths.

HOSE SIZE	SPECIFICATION NUMBER	ACCEPTANCE TEST PSI	SERVICE TEST PSI	BOWL SIZE	WEIGHT PER 50' UNCPLD.
1"	DB-800-SP	800 PSI	400 PSI	1-7/16"	11 lbs.
1-1/2"	DB-800-SP	800 PSI	400 PSI	1-15/16"	16 lbs.
1-3/4"	DB-800-SP	800 PSI	400 PSI	2-1/8"	18 lbs.
2"	DB-800-SP	800 PSI	400 PSI	2-1/2"	23 lbs.
2-1/2"	DB-800-SP	800 PSI	400 PSI	3"	27 lbs.
3"	DB-800-SP	800 PSI	400 PSI	3-17/32"	33 lbs.

DURA-FLOW 800™

DURA-FLOW 800™ is a 100% synthetic, [Cordura® Grade 6-6 polyamide warp], double jacket construction with a single-ply, extruded polyurethane line. The outside jacket is thoroughly impregnated with our Ultra-Shield™ high-tech polymer that is abrasion and moisture resistant. Available in 50 ft. or 100 ft. lengths.

HOSE SIZE	SPECIFICATION NUMBER	ACCEPTANCE TEST PSI	SERVICE TEST PSI	BOWL SIZE	WEIGHT PER 50' UNCPLD.
1"	DF-800-SYN	800 PSI	400 PSI	1-7/16"	9 lbs.
1-1/2"	DF-800-SYN	800 PSI	400 PSI	1-15/16"	12 lbs.
1-3/4"	DF-800-SYN	800 PSI	400 PSI	2-1/8"	14 lbs.
2-1/2"	DF-800-SYN	800 PSI	400 PSI	3"	21 lbs.
3"	DF-800-SYN	800 PSI	400 PSI	3-17/32"	24 lbs.

HI-RISE 2000™

HI-RISE 2000™ is a 100% synthetic, extremely light weight double jacket construction with a polyurethane extruded liner. Specifically designed for high rise back-pack applications requiring the maximum compactness and lightest weight possible in an NFPA 1961 attack grade hose. Available in 50 ft. and 100 ft. lengths.

HOSE SIZE	SPECIFICATION NUMBER	ACCEPTANCE TEST PSI	SERVICE TEST PSI	BOWL SIZE	WEIGHT PER 50' UNCPLD.
1-3/4"	HR-2000-SYN	600 PSI	300 PSI	2"	13 lbs.



General Purpose Products



GENERAL PURPOSE PRODUCTS



North American Fire Hose Corporation



HI-TECH 500™ and HI-TECH 600™

HI-TECH 500™ and HI-TECH 600™ has a 100% synthetic reinforcement construction which is totally encapsulated in a Nitrile Rubber compound utilizing a through-the-weave extrusion process. Available in 50 ft. or 100 ft. lengths.

Note: HI-TECH 500™ available in red only and 600™ is available in Red and Yellow colors. HI-TECH 600™ 2' available in Red only.

HOSE SIZE	SPECIFICATION NUMBER	ACCEPTANCE TEST PSI	SERVICE TEST PSI	BOWL SIZE	WEIGHT PER 50' UNCLD.
1"	HIT-600	600 PSI	300 PSI	1-1/4"	9 lbs.
1-1/2"	HIT-500	500 PSI	250 PSI	1-3/4"	11 lbs.
1-1/2"	HIT-600	600 PSI	300 PSI	1-13/16"	16 lbs.
1-3/4"	HIT-600	600 PSI	300 PSI	2-1/16"	18 lbs.
2"	HIT-600	600 PSI	300 PSI	2-5/16"	20 lbs.
2-1/2"	HIT-500	500 PSI	250 PSI	2-3/4"	20 lbs.
2-1/2"	HIT-600	600 PSI	300 PSI	2-13/16"	25 lbs.
3"	HIT-600	600 PSI	300 PSI	3-5/16"	35 lbs.

TRI-FLOW LDH™

TRI-FLOW LDH™ is a 100% synthetic, [Cordura® Grade 6-6 polyamide warp], double jacket, large diameter attach grade construction with a single-ply, extruded polyurethane liner. The outside jacket is thoroughly impregnated with our Ultra-Shield™ high-tech polymer that is abrasion and moisture resistant. The standard color is yellow. Available in 25 ft., 50 ft. or 100 ft. lengths.

HOSE SIZE	SPECIFICATION NUMBER	ACCEPTANCE TEST PSI	SERVICE TEST PSI	AVERAGE WEIGHT PER 100' CPLD.
4"	TF-600-LDH	600 PSI	300 PSI	80 lbs.
5"	TF-600-LDH	600 PSI	300 PSI	100 lbs.

HI-FLOW 400™

HI-FLOW 400™ has a 100% synthetic reinforcement which is totally encapsulated in a nitrile rubber compound, utilizing a through-the-weave [one-piece construction] process. The standard color is yellow.

HOSE SIZE	SPECIFICATION NUMBER	ACCEPTANCE TEST PSI	SERVICE TEST PSI	AVERAGE WEIGHT PER 100' CPLD.
4"	HF-400	400 PSI	200 PSI	80 lbs.
5"	HF-400	400 PSI	200 PSI	110 lbs.



Forestry Products



FORESTRY PRODUCTS



North American Fire Hose Corporation



OUTBACK 600™ FORESTRY HOSE

OUTBACK 600™ has a 100% polyester jacket with an extremely fine twill weave to improve abrasion resistance and to resist snagging. The hose is totally immune to the effect of mildew and incorporates an extruded polyurethane liner. Available in 50 ft. or 100 ft. lengths with our yellow Ultra-Shield™ high-tech polymer impregnation to improve abrasion and moisture resistance.

HOSE SIZE	SPECIFICATION NUMBER	ACCEPTANCE TEST PSI	SERVICE TEST PSI	BOWL SIZE	WEIGHT PER 100' UNCLPLD.
1"	OB-600	600 PSI	300 PSI	1-1/4"	8 lbs.
1-1/2"	OB-600	600 PSI	300 PSI	1-3/4"	12.5 lbs.
1-3/4"	OB-600	600 PSI	300 PSI	1-15/16"	17 lbs.

OUTBACK 600 HD™ FORESTRY HOSE

OUTBACK 600 HD™ utilizes the same jacket construction as OUTBACK 600™, while incorporating a light gauge rubber liner for improved puncture resistance where thorns or cactus are a concern. Available in 50 ft. or 100 ft. lengths with our yellow Ultra-Shield™ high-tech polymer impregnation to improve abrasion and moisture resistance.

HOSE SIZE	SPECIFICATION NUMBER	ACCEPTANCE TEST PSI	SERVICE TEST PSI	BOWL SIZE	WEIGHT PER 100' UNCLPLD.
1"	OB-600-HD	600 PSI	300 PSI	1-1/4"	11 lbs.
1-1/2"	OB-600-HD	600 PSI	300 PSI	1-3/4"	17 lbs.
1-3/4"	OB-600-HD	600 PSI	300 PSI	1-15/16"	22 lbs.

WILD FIRE-500™ FORESTRY HOSE

WILD FIRE-500™ has a synthetic jacket with a single ply polyurethane extruded liner. This hose is totally immune to the effects of mildew. Available in 50 ft. or 100 ft. lengths, in plain white or with our standard yellow Ultra-Shield™ impregnation.

HOSE SIZE	SPECIFICATION NUMBER	ACCEPTANCE TEST PSI	SERVICE TEST PSI	BOWL SIZE	WEIGHT PER 100' UNCLPLD.
1"	WF-500	500 PSI	250 PSI	1-1/4"	9 lbs.
1-1/2"	WF-500	500 PSI	250 PSI	1-3/4"	13 lbs.

NAFH-187™ FORESTRY HOSE

NAFH-187™ has a 100% synthetic jacket with a single ply polyurethane extruded liner. This hose is totally immune to the effects of mildew. This hose is comparable to the USFS 5100-187 specification. Available in 50 ft. and 100 ft. lengths.

HOSE SIZE	SPECIFICATION NUMBER	ACCEPTANCE TEST PSI	SERVICE TEST PSI	BOWL SIZE	WEIGHT PER 100' UNCLPLD.
1"	NAFH-187	500 PSI	250 PSI	1-1/4"	9 lbs.
1-1/2"	NAFH-187	500 PSI	250 PSI	1-3/4"	13 lbs.

NAFH-186™ FORESTRY HOSE

NAFH-186™ has a cotton polyester jacket with a high grade single ply extruded [SBR] rubber liner. The jacket has been treated against the effects of mildew in accordance with USFS requirements for 5100-186. This type of Forestry [Wild-land fire protection] fire hose is desirable when hose melting and burning is a major concern. Available in 50 ft. and 100 ft. lengths.

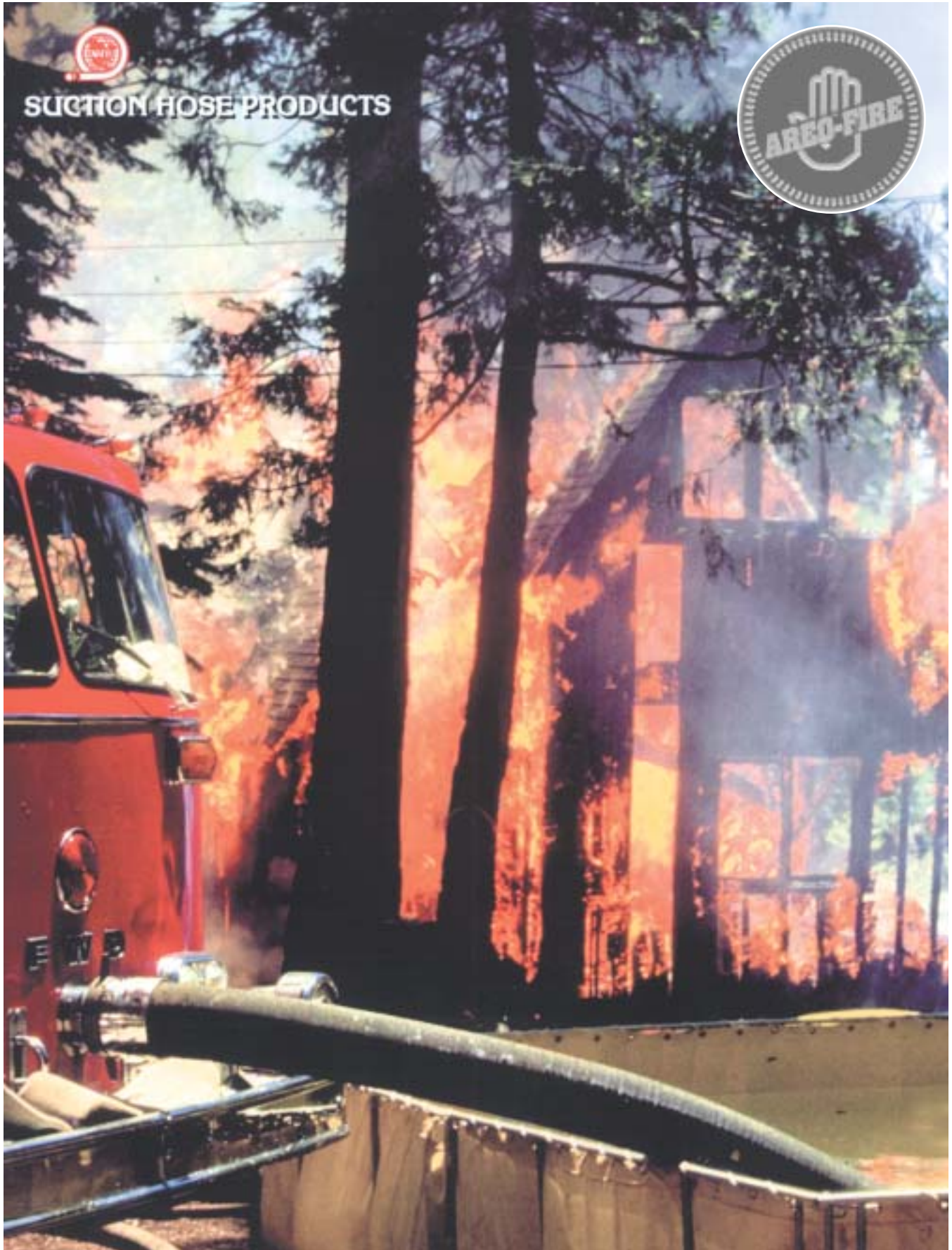
HOSE SIZE	SPECIFICATION NUMBER	ACCEPTANCE TEST PSI	SERVICE TEST PSI	BOWL SIZE	WEIGHT PER 100' UNCLPLD.
1"	NAFH-186	450 PSI	300 PSI	1-1/4"	16 lbs.
1-1/2"	NAFH-186	450 PSI	300 PSI	1-3/4"	24 lbs.

DURA-CAF 800™ FORESTRY HOSE

DURA-CAF 800™ is a 100% synthetic, [Cordura® Grade 6-6 polyamide warp], compact, double jacket construction with a single-ply, extruded polyurethane liner. DURA-CAF 800™ is specifically designed for use with Compressed Air Foam systems. The outside jacket is thoroughly impregnated with our Ultra-Shield™ high-tech polymer that is abrasion and moisture resistant. Available in 50 ft. or 100 ft. lengths.

HOSE SIZE	SPECIFICATION NUMBER	ACCEPTANCE TEST PSI	SERVICE TEST PSI	BOWL SIZE	WEIGHT PER 100' UNCLPLD.
1"	DCAF-800	800 PSI	400 PSI	1-1/2"	9 lbs.
1-1/2"	DCAF-800	800 PSI	400 PSI	1-15/16"	12 lbs.
1-3/4"	DCAF-800	800 PSI	400 PSI	2-1/8"	14 lbs.

Suction Hose Products



North American Fire Hose Corporation



SOFT SUCTION HOSE (Coated)

DB-SS4-D™ is a 100% synthetic, double jacket, rubber lined hose. Outside jacket is impregnated with our Ultra-Shield™ high-tech polymer for added abrasion and moisture resistance. The standard Ultra-Shield™ color is yellow. Available in lengths up to 50 ft.

HOSE SIZE	SPECIFICATION NUMBER	ACCEPTANCE TEST PSI	SERVICE TEST PSI	BOWL SIZE	WEIGHT PER 10' UNCPLD.
4"	DB-SS4-D	400 PSI	200 PSI	4- ¹⁷ / ₃₂ "	7 lbs.
4- ¹ / ₂ "	DB-SS4-D	400 PSI	200 PSI	5- ³ / ₁₆ "	8 lbs.
5"	DB-SS4-D	400 PSI	200 PSI	5- ¹⁵ / ₃₂ "	9 lbs.
6"	DB-SS4-D	400 PSI	200 PSI	6- ¹¹ / ₁₆ "	16 lbs.

FIRE ENGINE HARD SUCTION HOSE HD

FHS-HD FIRE ENGINE HARD SUCTION HOSE is heavy duty wire reinforced with an ozone resistant cover and cuffed [soft] ends. It is available in lengths from 6 ft. up to 20 ft.

HOSE SIZE	SPECIFICATION NUMBER	ACCEPTANCE TEST PSI	SERVICE TEST PSI	BOWL SIZE	WEIGHT PER 10' UNCPLD.
2- ¹ / ₂ "	FHS-HD25	200 PSI	100 PSI	3- ¹ / ₈ "	17 lbs.
3"	FHS-HD30	200 PSI	100 PSI	3- ⁵ / ₈ "	22 lbs.
4"	FHS-HD40	200 PSI	100 PSI	4- ⁵ / ₈ "	24 lbs.
4- ¹ / ₂ "	FHS-HD45	200 PSI	100 PSI	5- ¹ / ₈ "	38 lbs.
5"	FHS-HD50	200 PSI	100 PSI	5- ³ / ₄ "	52 lbs.
6"	FHS-HD60	200 PSI	100 PSI	6- ³ / ₄ "	62 lbs.

FIRE ENGINE HARD SUCTION HOSE MD

FHS-MD FIRE ENGINE HARD SUCTION HOSE is a medium duty, wire reinforced hose with an ozone resistant cover. It is available in lengths from 6 ft. to 20 ft.

HOSE SIZE	SPECIFICATION NUMBER	ACCEPTANCE TEST PSI	SERVICE TEST PSI	BOWL SIZE	WEIGHT PER 10' UNCPLD.
2- ¹ / ₂ "	FHS-MD25	200 PSI	100 PSI	3- ¹ / ₈ "	17 lbs.
3"	FHS-MD30	200 PSI	100 PSI	3- ⁵ / ₈ "	22 lbs.
4"	FHS-MD40	200 PSI	100 PSI	4- ⁵ / ₈ "	24 lbs.
4- ¹ / ₂ "	FHS-MD45	200 PSI	100 PSI	5- ¹ / ₈ "	38 lbs.

FIRE ENGINE CORRUGATED HARD SUCTION HOSE CHD

FHS-CHD FIRE ENGINE CORRUGATED HARD SUCTION HOSE is flexible wire reinforced with an ozone resistant cover and cuffed [soft] ends. It is available in lengths from 6 ft. up to 20 ft.

HOSE SIZE	SPECIFICATION NUMBER	ACCEPTANCE TEST PSI	SERVICE TEST PSI	BOWL SIZE	WEIGHT PER 10' UNCPLD.
2- ¹ / ₂ "	FHS-CHD25	200 PSI	100 PSI	3- ¹ / ₈ "	14 lbs.
3"	FHS-CHD30	200 PSI	100 PSI	3- ⁵ / ₈ "	17 lbs.
4"	FHS-CHD40	200 PSI	100 PSI	4- ⁵ / ₈ "	20 lbs.
4- ¹ / ₂ "	FHS-CHD45	200 PSI	100 PSI	5- ¹ / ₈ "	31 lbs.
5"	FHS-CHD50	200 PSI	100 PSI	5- ⁷ / ₁₆ "	40 lbs.
6"	FHS-CHD60	200 PSI	100 PSI	6- ³ / ₄ "	47 lbs.

North American Fire Hose Corporation



BOOSTER HOSE 800

BH-800 BOOSTER HOSE is a braided construction with an ozone resistant cover, available in lengths up to 200 ft. Specify coupling thread NST. Couplings are polished chrome plated brass, hole type style.

HOSE SIZE	SPECIFICATION NUMBER	WORKING PSI	WEIGHT PER 100' UNCPLD.
3/4"	BH-800	800 PSI	48 lbs.
1"	BH-800	800 PSI	64 lbs.

BOOSTER HOSE 300

BL-300 BOOSTER HOSE is a braided construction with an ozone resistant cover, available in lengths up to 200 ft. Available with NST thread only.

HOSE SIZE	SPECIFICATION NUMBER	WORKING PSI	WEIGHT PER 100' UNCPLD.
3/4"	BL-300	300 PSI	37 lbs.
1"	BL-300	300 PSI	56 lbs.

OPTIONS AVAILABLE ULTRA-SHIELD™ COATING

If a coating is required on any hose, it will consist of a thorough impregnation of the outer jacket with our high-tech, abrasion resistant, ultra-violet light resistant and moisture resistant Ultra-Shield™ polymer coating system. Formulated, developed and manufactured by North American Fire Hose Corporation, Ultra-Shield™ is the most effective and the highest quality coating system available in the industry today. Ultra-Shield™ is applied under tremendous pressure to completely saturate the jacket cross-section and is heat set in a two-stage process for maximum durability. Ultra-Shield™ is available on the following woven jacket constructions.

DURATTACK 1000™ • DURASSAULT 800™ • POLY-TUFF 800™ • POLY-FLOW 800™ • DURA-BUILT 800™
DURA-BUILT 800™ SPL. • DURA-FLOW 800™ • TRI-FLOW LDH™ • OUTBACK 600™ • OUTBACK 600 HD™
WILDFIRE 500™ • DURA-CAF 800™ • DB-SS4-D

ULTRA SHIELD™ COATINGS: Standard colors are YELLOW • RED • TAN • ORANGE.
Additional colors of BLUE • GREEN • BLACK available on Special Request.



Suction Hose

Suction Hose

All couplings are extruded 6061-T6 light-weight, high strength aluminum alloy. Long handles are finger-gripped and canted for clearance. Sizes 2½" thru 3½" assembled with ball bearings. Sizes 4" thru 6" assembled with roller bearings. Complete with expansion rings, tail gaskets and swivel gasket.

STYLE 19

Long handle female only. Hardcoat, polished. Also available in chrome (K-19). For rocker lug female, see Style 9800.

STYLE 299

Complete sets - Long handle female, rocker lug male - hardcoat, polished. Also available in chrome (K-299).



Style 299



Style 19



“Ripro” Fire Hose Winder

Out the coil cavity into the main part. Assemble with the two screws by using the umbraco key.

Remember to put the coil so that the handle comes out to the hand you are using to wind (right or left handed).



Fasten the bracket where you want to use the winder. We recommend the bracket to be mounted in a vertical position. Fasten the bracket so that the pin on top are closest to the edge. The winder will slide down in position and rest on the bracket. Additional brackets can be supplied.



Let the top half of the hose be about 40 cm. (1,33 ft.) longer than the underlaying.

This will ensure both couplings are together when the hose is wound.

Place the bended hose between the gripping arm. Drag it gently towards you, and start.



The hose is now even and compact. The even winding is a result of holding the hose towards the guardrail.



When winding, ensure that the hose gently rest towards the guardrail to get even coiling.

Excessive water in the hose will be drained during this operation.



When the whole hose is wound the couplings are gathered in the end.



Part #35 Globe 2 1/2" Hose Washer

Lightweight cast aluminum.

Conical water spray guides hose through washer. Overall length 10" by 11" high.

Adjustable spray washes hose to 3" size.

INLET 1 1/2" N.P.S.H.

Brass swivel c/w gasket.



Release the hose by dragging the handle back half a turn. The hose will be released from the cylinder.



Place at least one of your hands close to the center of the wound hose and pull the hose off.

You have a wound hose in less than 30 seconds.



The Fire Hose Winder can be mounted on fire trucks, walls, trolleys or cabinets.

The winder is Suitable for hoses up to 2 1/2" and 33 meters (100 ft.)

"It All Comes Out In The Wash"

ROTO-JET

THE **CIRCUL-AIR** CORP

THE "AUTOMATIC" FIRE HOSE WASHER

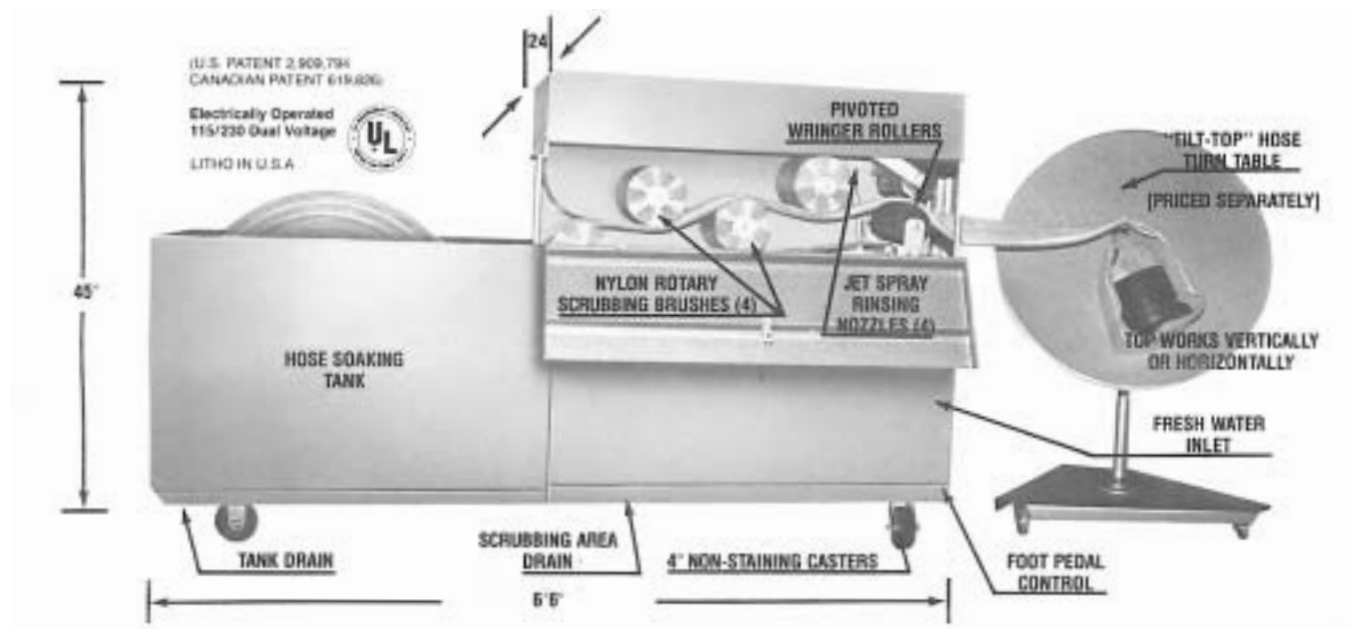
Washes • Rinses • Drains

You'll be amazed at how thoroughly... how easily... how quickly this remarkable cleaner does its job. Ashes, dirt, silt, mud and sludge are scrubbed and flushed away, restoring hose to its original color "in a jiffy". Quiet, chain-drive operation eliminates need for service and repairs. Built to last a lifetime and equipped with long-wearing, genuine nylon brushes.

- **HOSE IS SELF-PROPELLED** — A convenient foot pedal applies pressure on the pivoted wringer roll, pulling hose through the washer under its own power. Tail coupling passes through automatically. Upper roller is spring-lifted, depressed by pedal.
- **UNIFORM WASHING** — The wringers, in propelling hose through washer assure even, uniform cleaning at a rate of about 30 ft. per minute.
- **WASHES EDGES, TOO** — Illustration shows how hose imbeds itself in the soft-staggered nylon brushes, thereby scrubbing edges as well as flat surfaces.
- **DRAINS HOSE LININGS** — "Squeegee" action of neoprene wringer rolls eliminate necessity of hanging hose in towers or "walking" it before drying.
- **ONE-MAN OPERATION** — One or two complete sections may be placed in the tank at a time, and only one man is required at the discharge end to re-roll the hose.
- **CLEANS WITH OR WITHOUT DETERGENTS** — Hose is soaked in immersion tank filled with luke-warm or cold water. Soaps or detergents may be added as preferred.
- **WATER PRESSURE** — A garden hose, from your water tap provides ample pressure to rinsing-scrubbing area. Soaking tank may be filled by hose or pail. If operated over a floor drain no plumbing is required.
- **PORTABLE** — 4 non-staining casters (2 swiveled). Floor lock holds washer in position.

BETTER HOSE CARE-WITH CIRCUL-AIR HOSE CONDITIONING EQUIPMENT

WASHERS • TURN-TABLES • DRYERS • STORAGE RACKS



Dual Purpose Dryer

Dual Purpose Drying Cabinet

THE **CIRCUL AIR** CORP

After contaminated hose and turnout gear has been thoroughly and safely washed it is necessary for equipment to be dried quickly and safely. Circul Air Drying Cabinets provide a safe and more economical alternative to the cost of towers and the damaging practice of drying on hot pavement or intense sunlight which potentially damages expensive equipment.

Fresh air is drawn over thermostatically controlled, 1000-watt heater strips by a high volume, top mounted, axial fan. This dryer setting maintains an optimum hose drying temperature. Ambient air setting dries without heat providing, an alternative to warm air settings.

Hose and turnout gear are able to be dried quickly and safely minimizing shrinkage while ensuring a rapid return to service.



Readily handles normal crews' turnout gear.

Rapidly dries hose and turnout gear



PORTO-RAK Mobile Hose Storage Unit

The ultimate in convenience by Circul-Air

THE **CIRCUL-AIR** CORP

The PORTO-RAK eliminates the need to carry heavy fire hose and keeps clean hose off the floor while re-loading. Fire personnel love the PORTO-RAK for those reasons alone! The PORTO-RAK replaces unsightly "Do-It-Yourself" racks of wood and pipe that induce mildew, invariably sag, and inevitably rot. Chiefs tend to love the PORTO-RAK for these reasons!

* **PORTABLE** — Store it where convenient and simply roll it where needed. Every time you re-load your pumper, or re-roll directly from the apparatus floor the PORTO-RAK will save you time and hard work.

* **COMPACT** — Only 32" wide x 6'5" high x 8'7" long, when turn-table is detached. Overall length is 12½ ft. with table attached.

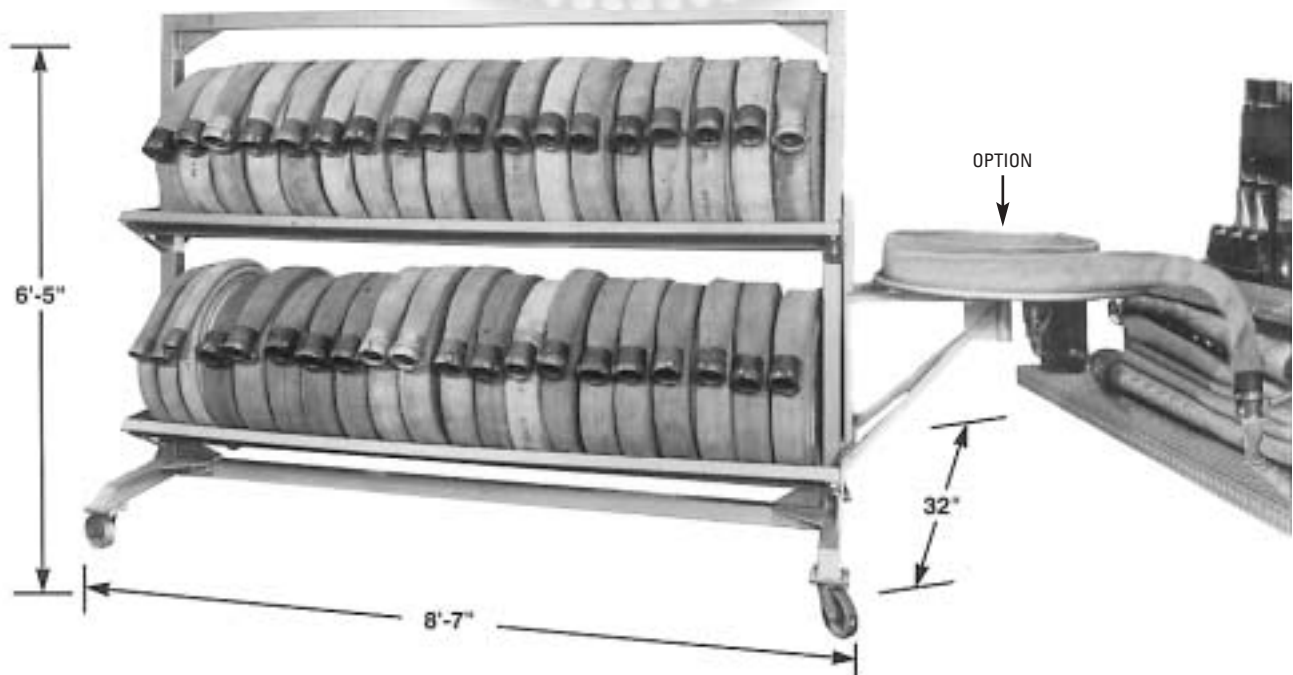
* **CAPACITY** — Holds 2000 ft. of 2½" hose; a little more of 1½", a little less of 3½". PORTO-RAK will handle your largest hose with ease, therefore actual capacity will vary with the size of hose stored. PORTO-RAK will now handle even 100 ft. coils on the lower tier.

* **STURDY** — Made of extra heavy square steel tubing. Features welded and bolted construction, with reinforced corners and supports. Finished with a rust resistant paint, and equipped with heavy duty, non-staining casters.

* **DETACHABLE TURN-TABLE** makes re-rolling hose an easy, fast, strain-free operation. PORTO-RAK is also available without the turntable. However, Circul-Air strongly recommends that every station have at least one hose turntable. Their extreme versatility and usefulness make them a "must have" item.

* PORTO-RAK is shipped knocked down for economy of shipping, and is easily assembled.

The universal appeal of this multi-purpose hose carrier lies in its convenience, compactness, flexibility, and great eye appeal. It is simply the finest mobile storage rack available. Like all Circul-Air products it is designed to work and built to last.



TILT-TOP Hose Loading Turn Table...

Another innovation from Circul-Air Corp.

THE **CIRCUL-AIR** CORP

Quite possibly the most versatile device ever designed for handling fire hose. The Tilt-Top Turn Table is a "must have" for every station. All hose needs to be re-wound after use or testing. Therefore, the Tilt Top is the tool to have to turn an unpleasant time consuming chore into an easy, fast, operation. The turntable operates in both vertical and horizontal positions. Each position allows this remarkable device to perform different functions ranging from a re-roller to a re-loader. To switch table positions, simply pull the safety locking pin, swing the turn table to the desired position and replace the pin. Simple, Fast, Secure.

In the horizontal position the Tilt-Top is used as a re-loader. Merely roll the Tilt-Top to your pumper to change a load, or re-roll directly from the apparatus floor. The Tilt-Top is the perfect adjunct to hose dryers as well, becoming the ideal work table. Simply place the dryer tray on the table, put the coiled hose on the tray, then loosen the coils for optimum air circulation in the dryer.



With the turntable in the vertical position the Tilt Top is used to re-roll hose. While re-rolling in this position the hose is also thoroughly drained. The Tilt-Top rolls a tight, uniform coil with edges flush, ideal for carrying. It is also the perfect companion to a hose washer, keeping the clean, wet hose off the floor while at the same time, draining it.



The Tilt-Top is made of very heavy gauge steel, with welded and bolted construction. It's large diameter turn-table allows even extra long coils to be re-wound, and all hose diameters up to 5" can be accommodated.

“HOSE TESTER”

ARÉO-1000 Fast, Safe, Reliable

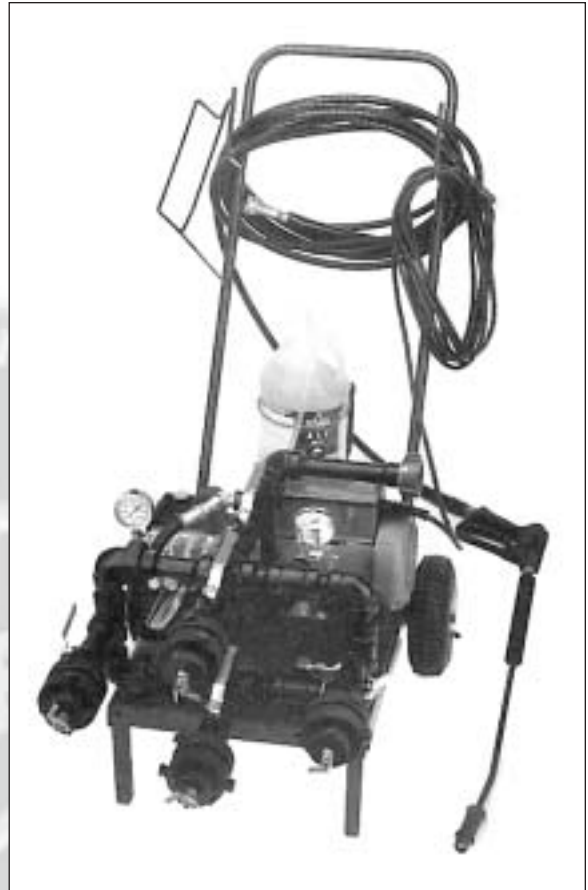


This unit was built to reduce personnel as they test all different size hoses. The ARÉO-1000 is delivered with one 1 1/2" inlet, 4 outlets 1 1/2", 4 adapters 2 1/2" with plugs and chains. Delivery is 1 to 3 weeks. Each hose tester is equipped with a check valve incorporated in the pump and a pressure relief valve. With this tool you will eliminate any risk of damaging your Fire pumper or portable pump.

The possibility of a quick back pressure created by a ruptured hose due to testing is eliminated from the check valve clapper incorporated with the pump and the pressure relief valve.

It is possible to test different sizes of hoses, from 3/4" to 6". This tester can test 4 sections of 300' at a time. A variety of adapters are available upon request.

In a close study of the market, we were able to develop a hose tester with better performance, very safe and an affordable price. Each hose tester is shipped with a maintenance and instruction manual. Each hose tester is assembled in regards to the last NFPA & ASTM requirements.



SPECIFICATIONS

PUMP	3 story brass pump 0-1000 lbs., installed directly on the motor.
CHECK VALVE CLAPPER	Each pump is assembled with check valve.
RELIEF VALVE	The relief valve is made of solid brass and is adjustable from 0-1000 lbs.
PIPING	Constructed with 1" forged pipes, tested at 1000 lbs. in our shop.
GAUGES	2 liquid filled gauges to indicate the pressure of the pump and a gauge when testing of hoses.
TROLLEY	Constructed with a sturdy steel frame painted with an enamel red, equipped with 2 wheels in the back, 2 permanent front supports and a retractable handle.
PRESSURE GUN	Each hose tester is delivered with a pressure gun, 30' of flexible hose and a container for the detergent.
DIMENSIONS	24" high without handle, width 22.5", depth 34".
WEIGHT	Approximatly 115 lbs.
MOTOR	1.5 H.P. Motor, 3450 RPM, 110 volts completely insulated, also provided with a cooling fan, and a 6' electric cord.
GUARANTEE	1 year parts and labour.

