

FTM-1(A) Firephone Control Module with FlashScan®

Section: Intelligent/Addressable Devices

GENERAL

FTM-1(A) Firephone Control Module — The FTM-1 Addressable Firephone Control Module provides NOTIFIER's NFS-640 and NFS-3030 the capability to monitor and control a circuit of up to two firefighter phones. The FTM-1 has the ability to differentiate between normal, off-hook, and trouble conditions. This module is used to connect a remote firefighter telephone to a centralized telephone console. A ringing sound is provided at each off-hook handset until it is connected to the console. The user can then connect that off-hook phone to the main riser for the voice evac system.

Wiring to individual telephone jacks and handsets is supervised, and status is reported to the panel as NORMAL, TROUBLE, or OFF HOOK. This module has two pairs of output termination points available for fault-tolerant wiring (Style Z), and includes a panel-controlled LED indicator.

FlashScan® (U.S. Patent 5,539,389) is a new communication protocol developed by NOTIFIER Engineering that greatly enhances the speed of communication between analog intelligent devices. Intelligent devices communicate in a grouped fashion. If one of the devices within the group has new information, the panel CPU stops the group poll and concentrates on single points. The net effect is response speed **greater than five times** that of other designs.

FEATURES

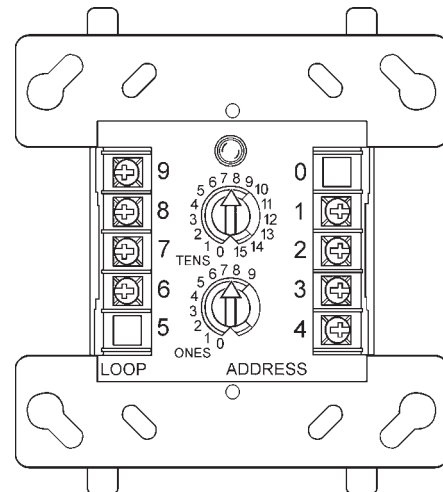
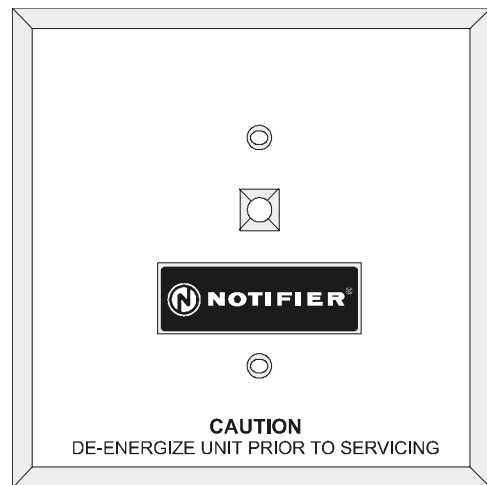
- Supports two firefighter telephones in either NFPA Style Y or Style Z (Fault Tolerant) telephone circuits.
- Direct-dial entry of address 01– 159 for FlashScan®.
- Built-in type identification automatically identifies itself to the control panel.
- Internal circuitry and relay powered directly by two-wire SLC loop. Internal relay feature available on FlashScan® systems only.
- Integral LED “blinks” green each time a communication is received from the control panel.
- LED blink may be deselected globally (affects all devices).
- High noise immunity (EMF/RFI).
- Wide viewing angle of LED.
- SEMS screws with clamping plates for wiring ease.

FTM-1 Software Compatibility	
NFS-640	As of Ver. 3.1.3
NFS-3030	As of Ver. 2.2.9
LCM	As of Ver. 2.3.7

FlashScan® and NOTIFIER® are registered trademarks of Honeywell International Inc. Noryl® is a registered trademark of GE Plastics, a subsidiary of General Electric Company.



MEA
110-04-E



FTM-1 Module

CONSTRUCTION

- The face plate is made of off-white Noryl®.
- Controls include two rotary switches for direct-dial entry of address (01-159).
- The FTM-1 is configured for either a single Class B (Style Y) or Class A (Style Z) telephone circuit.

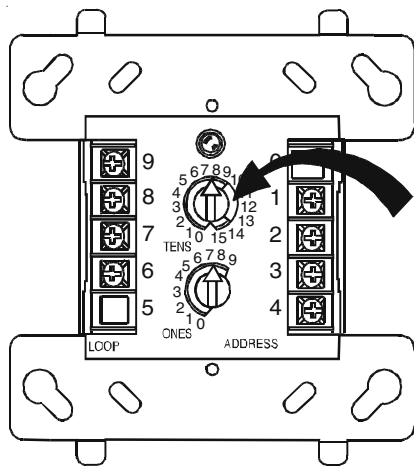
This document is not intended to be used for installation purposes. We try to keep our product information up-to-date and accurate. We cannot cover all specific applications or anticipate all requirements. All specifications are subject to change without notice. For more information, contact NOTIFIER. Phone: (203) 484-7161 FAX: (203) 484-7118

FTM-1(A) OPERATION

The FTM-1 uses one of 159 possible module addresses on a SLC loop. It responds to regular polls from the control panel and reports its type and status, including NORMAL, TROUBLE, or OFF HOOK status of its telephone circuits. The LED blinks with each poll received.

Upon code command from the panel, the FTM-1 will disconnect the supervision and connect the telephone riser to its telephone circuit. The telephone riser is always relay isolated from the communication loop so that a trouble condition on the riser will never interfere with the rest of the system.

Rotary switches set a unique address for each module. The address may be set before or after mounting. The built-in TYPE CODE (not settable) will identify the module to the control panel, so as to differentiate between a module and a sensor address.



SPECIFICATIONS for FTM-1

Normal operating voltage: 15 to 32 VDC.

Maximum current draw: 7.5 mA (LED on).

Average operating current: 7.5 mA group poll (FlashScan® mode) with LED flashing.

External supply voltage (between Terminals T3 and T4): maximum 28 VDC.

EOL resistance: 3.9K ohms.

Temperature range: 32°F to 120°F (0°C to 49°C).

Humidity range: 10% to 93% non-condensing.

Dimensions: 4.5" (11.43 cm) high x 4" (10.16 cm) wide x 1.25" (3.175 cm) deep. Mounts to a 4" (10.16 cm) square x 2.125" (5.398 cm) deep box.

PRODUCT LINE INFORMATION

FTM-1 Intelligent Addressable Firephone Control Module, 3.9K ohm End-of-Line Resistor included.

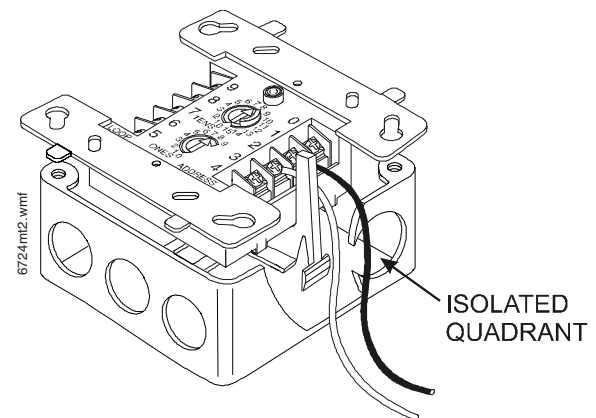
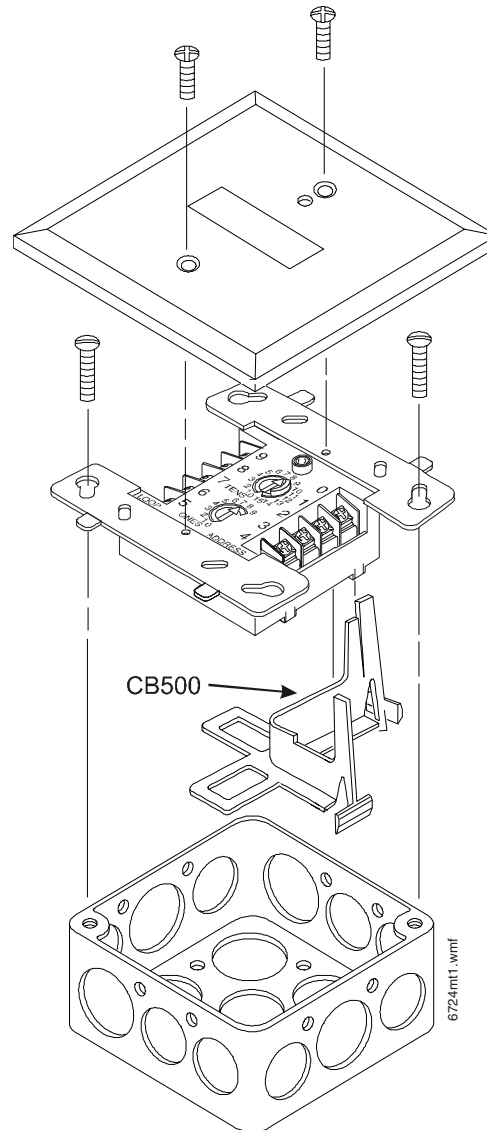
FTM-1A Same as FTM-1 with ULC listing.

SMB500 Optional Surface-Mount Electrical Backbox.

CB500 Control Module Barrier — required by UL for separating power-limited and non-power-limited wiring in the same junction box as FTM-1.

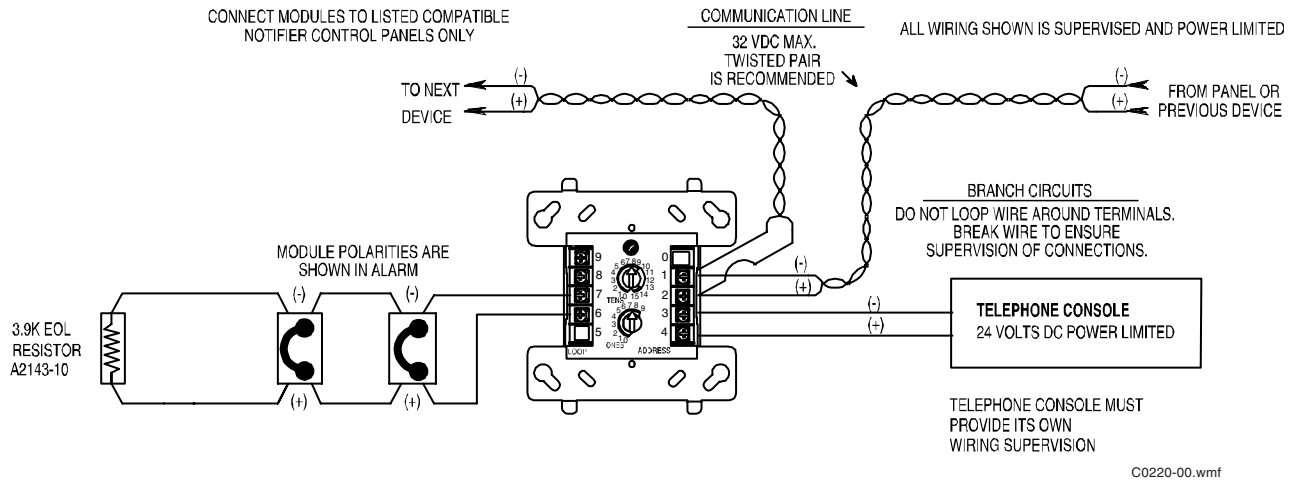
MOUNTING DIAGRAMS

Note CB500 Module Barrier, which creates isolated quadrant.



▼ **Fig. 1 M500MPJ: Typical circuit configuration, NFPA Style Y:**

- Connect modules to Listed compatible NOTIFIER control panels only.
- All wiring shown is supervised (required).



▼ **Fig. 2 M500MPJ: Typical fault tolerant circuit configuration, NFPA Style Z:**

- Connect modules to Listed compatible NOTIFIER control panels only.
- All wiring shown is supervised (required).

